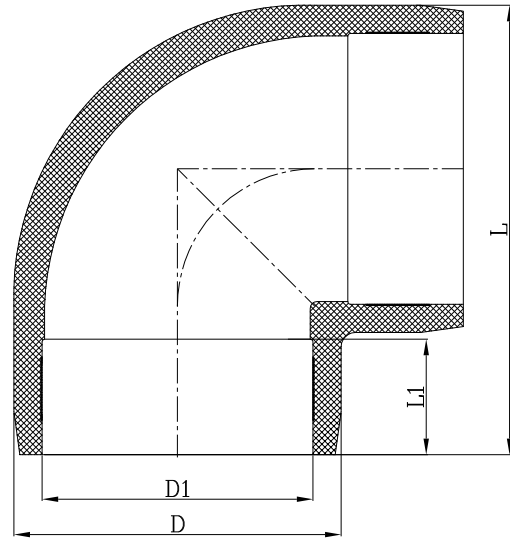


# DATASHEET

## LARGE DIAMETER ELECTROFUSION

### 90° ELBOW

d200 - 250mm



<b>Sizes</b>	200, 225 and 250mm by 90°
<b>Raw Material</b>	PE100 Black
<b>Pressure Rating</b>	Water PN16 Gas 10 Bar
<b>Pipe SDR Range</b>	200mm - 225mm: SDR11 - 17.6 250mm: SDR11 - 21
<b>Specifications</b>	All Fusamatic large diameter electrofusion 90° elbows are tested and have 3rd party approval against the following standards: <ul style="list-style-type: none"> <li>• EN12201-3 / UNI EN12201-3</li> <li>• EN1555-3 / UNI EN1555-3</li> <li>• ISO 4427-3</li> <li>• ISO 4437-3</li> <li>• MS1058 Part 3</li> <li>• AS/NZS 4129 and ISO Type 5</li> <li>• AS/NZS 4129 and WaterMark Level 1</li> <li>• INSTA SBC 12201-3 and INSTA SBC EN1555-3 (upon request)</li> </ul>

#### Product codes and dimensions

4mm Auto Pin Fitting Code	4.7mm Auto Pin Fitting Code	Fitting Size	L	L1	D	D1	Fusion Time	Cooling Time	Weight	Box Quantity	Box Size (W X L X D)
		mm	mm	mm	mm	mm	secs	mins	Kg		mm
EBKHFA200X90	EBKHA200X90	200	335	90	243	200	440	20	5.2	2	370 x 560 x 340
EBKHFA225X90	EBKHA225X90	225	376	100	274	225	600	30	7.4	2	400 x 600 x 390
EBKHFA250X90	EBKHA250X90	250	409	115	304	250	900	30	9.7	1	440 x 340 x 460