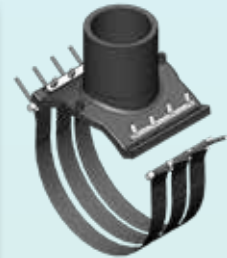
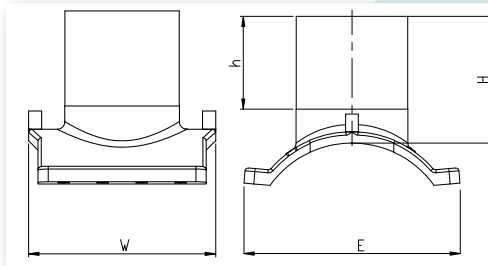




Branch Saddle | Understrap 110 - 180mm outlet

Specification

- PE100
- Water PN16
- Gas 10 Bar
- d315x110 - 630x180



4mm Pin Fitting Code	Fitting Size	H	h	W	E	Fusion Time	Cooling Time	Weight	Box Quantity	Box Size (W X L X D)	Delivery Code	Gross Price
	mm	mm	mm	mm	mm	secs	mins	Kg		mm		£ GBP
BBKHFM315X110U	315 x 110	193	150	300	360	460	20	4.48	1	295 X 485 X 333	C	POA
BBKHFM315X125U	315 x 125	193	150	300	360	460	20	4.48	1	295 X 485 X 333	C	POA
BBKHFM315X160U	315 x 160	193	150	300	360	460	20	4.97	1	295 X 485 X 333	C	POA
BBKHFM315X180U	315 x 180	193	150	300	360	460	20	4.99	1	295 X 485 X 333	C	POA
BBKHFM355X110U	355 x 110	193	150	300	360	460	20	4.45	1	295 X 485 X 333	C	POA
BBKHFM355X125U	355 x 125	193	150	300	360	460	20	4.48	1	295 X 485 X 333	C	POA
BBKHFM355X160U	355 x 160	193	150	300	360	460	20	4.84	1	295 X 485 X 333	C	POA
BBKHFM355X180U	355 x 180	193	150	300	360	460	20	5.04	1	295 X 485 X 333	C	POA
BBKHFM400X110U	400 x 110	193	150	300	360	460	20	4.48	1	295 X 485 X 333	C	POA
BBKHFM400X125U	400 x 125	193	150	300	360	460	20	4.59	1	295 X 485 X 333	C	POA
BBKHFM400X160U	400 x 160	193	150	300	360	460	20	4.84	1	295 X 485 X 333	C	POA
BBKHFM400X180U	400 x 180	193	150	300	360	460	20	4.34	1	295 X 485 X 333	C	POA
BBKHFM630X110U	630 x 110	193	150	300	360	460	20	5.00	1	295 X 485 X 333	C	POA
BBKHFM630X125U	630 x 125	193	150	300	360	460	20	5.00	1	295 X 485 X 333	C	POA
BBKHFM630X160U	630 x 160	193	150	300	360	460	20	5.10	1	295 X 485 X 333	C	POA
BBKHFM630X180U	630 x 180	193	150	300	360	460	20	5.10	1	295 X 485 X 333	C	POA

Flanged Branch Saddle | Underclamp

Specification

- PE100
- Water PN16
- Gas 10 Bar
- d110xDN80 - d630xDN100

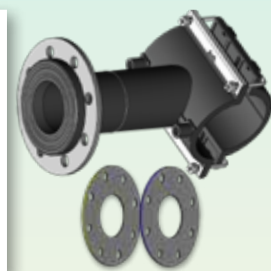
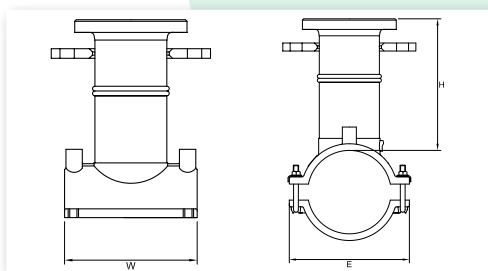
For use with large diameter under pressure drill

Fabricated fitting - 'H' height dimension may vary subject to component availability.

U - Flange branch saddle assembly and galvanised backing ring

DP - as above, including NBR and EPDM full face gaskets

Rilsan backing ring available upon request



4mm Pin Fitting Code	Fitting Size	H	W	E	Fusion Time	Cooling Time	Weight	Box Quantity	Box Size (W X L X D)	Delivery Code	Gross Price
	mm	mm	mm	mm	secs	mins	Kg		mm		£ GBP
FBBKHFA110X80U	110 x 80 NP16	242	165	180	120	10	1.10	1	510 X 390 X 380	C	POA
FBBKHFA125X80U	125 x 80 NP16	242	165	180	120	10	2.86	1	510 X 390 X 380	A	POA
FBBKHFA160X80U	160 x 80 NP16	194	215	236	120	10	3.82	1	510 X 390 X 380	C	POA
FBBKHFA160X100U	160 x 100 NP16	194	215	236	120	10	2.41	1	510 X 390 X 380	C	POA
FBBKHFA180X80U	180 x 80 NP16	242	215	236	120	10	3.79	1	510 X 390 X 380	C	POA
FBBKHFA180X100U	180 x 100 NP16	216	215	236	120	10	4.06	1	510 X 390 X 380	B	POA
FBBKHFA200X80U	200 x 80 NP16	188	165	263	120	10	4.64	1	510 X 390 X 380	C	POA
FBBKHFA225X80U	225 x 80 NP16	188	165	291	120	10	4.74	1	510 X 390 X 380	C	POA
FBBKHFA250X80U	250 x 80 NP16	193	165	317	120	10	4.39	1	510 X 390 X 380	B	POA
FBKHFM225X100DP	225 x 100 NP16	190	310	327	500	30	9.30	1	510 X 390 X 380	C	POA
FBKHFM250X100DP	250 x 100 NP16	190	310	327	500	30	9.36	1	510 X 390 X 380	C	POA
FBKHFM315X100DP	315 X 100 NP16	190	300	360	460	20	7.52	1	510 X 390 X 380	C	POA
FBKHFM355X100DP	355 X 100 NP16	190	300	360	460	20	7.82	1	510 X 390 X 380	C	POA
FBKHFM400X100DP	400 X 100 NP16	190	300	360	460	20	7.77	1	510 X 390 X 380	C	POA
FBKHFM630X100DP	630 X 100 NP16	190	300	360	460	20	7.77	1	510 X 390 X 380	C	POA



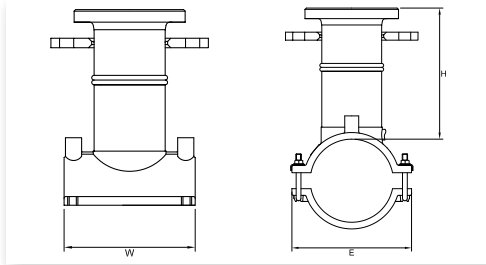
Flanged Branch Saddle | Underclamp Fastcut

Specification

- PE100
- Water PN16
- Gas 10 Bar
- d250xDN150 - d630xDN150

DP - Flange branch saddle assembly and galvanised backing ring, including NBR and EPDM full face gaskets

Only available through approved fastcut installers



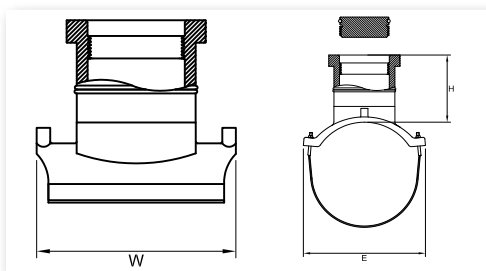
4mm Pin Fitting Code	Fitting Size	H	W	E	Fusion Time	Cooling Time	Weight	Box Quantity	Box Size (W X L X D)	Delivery Code	Gross Price
	mm	mm	mm	mm	secs	mins	Kg		mm		£ GBP
FBKHFM250X150DP	250 x 150 NP16	190	310	320	460	20	11.11	1	510 X 390 X 380	C	5,223.05
FBKHFM250X200DP	250 x 200 NP16	190	310	320	460	20	12.81	1	510 X 390 X 380	C	5,493.47
FBKHFM280X150DP	280 x 150 NP16	190	310	320	360	20	12.80	1	510 X 390 X 380	C	5,426.48
FBKHFM280X200DP	280 x 200 NP16	190	310	320	360	20	12.80	1	510 X 390 X 380	C	5,669.65
FBKHFM315X150DP	315 x 150 NP16	190	300	360	460	20	7.82	1	295 X 485 X 333	C	5,240.45
FBKHFM315X250DP	315 x 250 NP16	190	420	385	600	30	26.90	1	620 X 465 X 480	C	6,434.96
FBKHFM355X150DP	355 x 150 NP16	190	300	360	460	20	8.128	1	295 X 485 X 333	C	2,135.42
FBKHFM355X250DP	355 x 250 NP16	190	420	425	600	30	26.72	1	620 X 465 X 480	C	6,700.02
FBKHFM400X150DP	400 x 150 NP16	215	300	360	460	20	7.77	1	295 X 485 X 333	C	2,149.63
FBKHFM400X250DP	400 x 250 NP16	215	420	440	600	30	7.77	1	620 X 465 X 480	C	6,919.55
FBKHFM450X150DP	450 x 150 NP16	215	420	530	440	30	15.24	1	620 X 465 X 480	C	6,086.09
FBKHFM450X250DP	450 x 250 NP16	215	420	530	440	30	15.24	1	620 X 465 X 480	C	6,674.79
FBKHFM500X150DP	500 x 150 NP16	215	420	580	440	30	15.24	1	620 X 465 X 480	C	6,416.11
FBKHFM500X250DP	500 x 250 NP16	215	420	580	440	30	15.24	1	620 X 465 X 480	C	6,998.43
FBKHFM630X150DP	630 x 150 NP16	215	300	360	460	20	8.39	1	295 X 485 X 333	C	2,111.06

Flanged Branch Saddle | Understrap ALH Flowstop

Specification

- PE100
- Gas 10 Bar
- d315xDN150 - d400xDN150

Only available through approved fastcut installers
For use with ALH flowstop bagtube



4.7mm Pin Fitting Code	Fitting Size	H	W	E	Fusion Time	Cooling Time	Weight	Box Quantity	Box Size (W X L X D)	Delivery Code	Gross Price
	mm	mm	mm	mm	secs	mins	Kg		mm		£ GBP
FBKHM315X150ALH	315 x 150 NP16	190	300	360	460	20	7.82	1	295 X 485 X 333	C	5,240.45
FBKHM355X150ALH	355 x 150 NP16	190	300	360	460	20	7.48	2	620 X 465 X 480	C	6,916.36
FBKHM400X150ALH	400 x 150 NP16	215	300	360	460	20	7.73	2	620 X 465 X 480	C	7,280.40