

# TRANSITION FITTINGS



# TRANSITION FITTINGS FOR GAS AND WATER



Transition fittings are a quick and easy way to connect various types of metallic pipes to PE pipe systems, using either a traditional flange, threaded or a modern SupaGrip™ fitting.

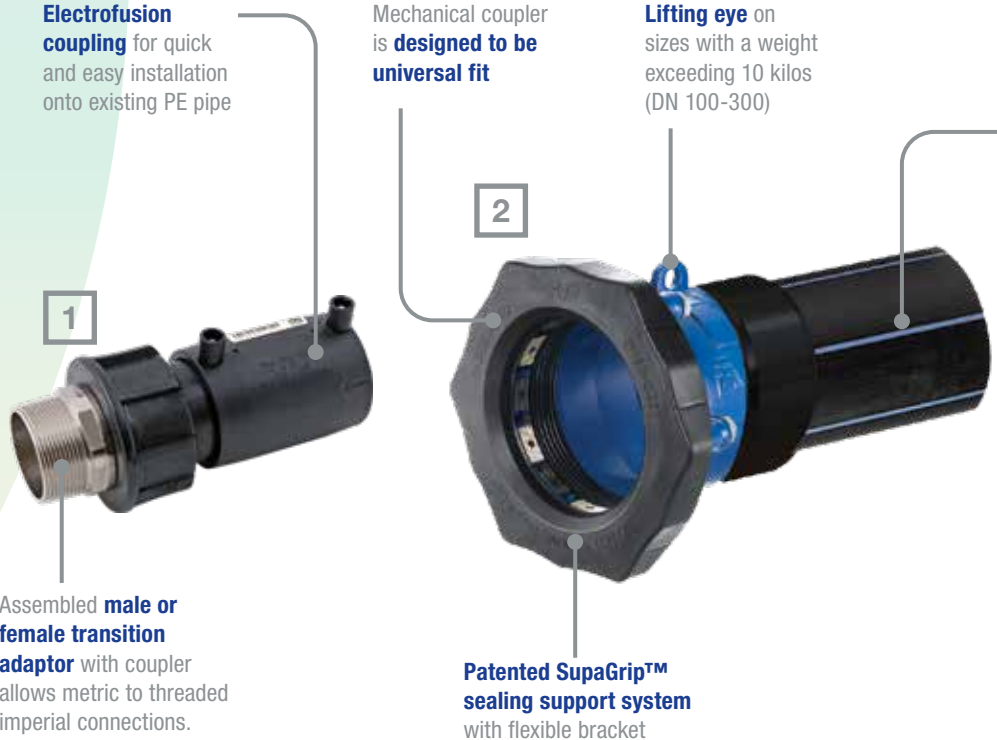
All fittings supplied by Fusion are manufactured according to the appropriate industry standards with the mechanical joint between the metal and PE fully end loading.

There is a varied range of fittings available under the title transition fittings including valves, elbows, and straight transitions from d25 to 250 PE in both PE80 and PE100 materials.

**Electrofusion coupling** for quick and easy installation onto existing PE pipe

Mechanical coupler is **designed to be universal fit**

**Lifting eye** on sizes with a weight exceeding 10 kilos (DN 100-300)



Assembled **male or female transition adaptor** with coupler allows metric to threaded imperial connections.

**Patented SupaGrip™ sealing support system** with flexible bracket



PE ends enable the fittings to be directly electrofused to the existing pipeline **saving time and money**

**Purpose designed positioning plate** secures the fitting to the concrete pad to ensure that the correct height is guaranteed.

4



**1. Fusion Male transition coupler for GAS and WATER**

Suitable for electrofusion welding on site but also available separately for manifold applications or pre fabrication. Other materials and threads are available upon request depending on specialist applications. A simple but effective solution for house connections, used by many operators internationally.

**2. Supa Maxi™ range of universal tensile for WATER.**

The patented SupaGrip™ sealing support system with flexible bracket ensures full support of the gasket and full tensile strength on all pipe types up to PN16. Supa Maxi™ couplings are very easy to mount with the possibility of ±4° angular deflection, the permanent protection caps, the lifting eye and that they are tightened from the sleeve side with no need for re-tightening the bolts.

**3. Donkin Mechanical Coupler for GAS**

The Series 604 mechanical coupler with PE tail has been designed as a transition fitting to join metallic and PE gas pipes. The mechanical coupler is designed to be universal in most diameters whilst the PE end is available in SDR17 PE80 pipe suitable for the low and medium pressure network.

**4. Meter Module Riser Fittings for GAS**

The Series 218 Meter Module Riser Fittings are transition fittings designed to connect the underground PE pipework to the Emergency Control Valve at the inlet of a Meter Module. They can also be used on the outlet pipework to transition back to PE from the steel. Small diameters are available with threaded ends and the larger sizes with PN16 flanges for easy connection.

3



4 bolts for **quick and easy installation**

Split flange ring for ease of installation and **flexible hole alignment**



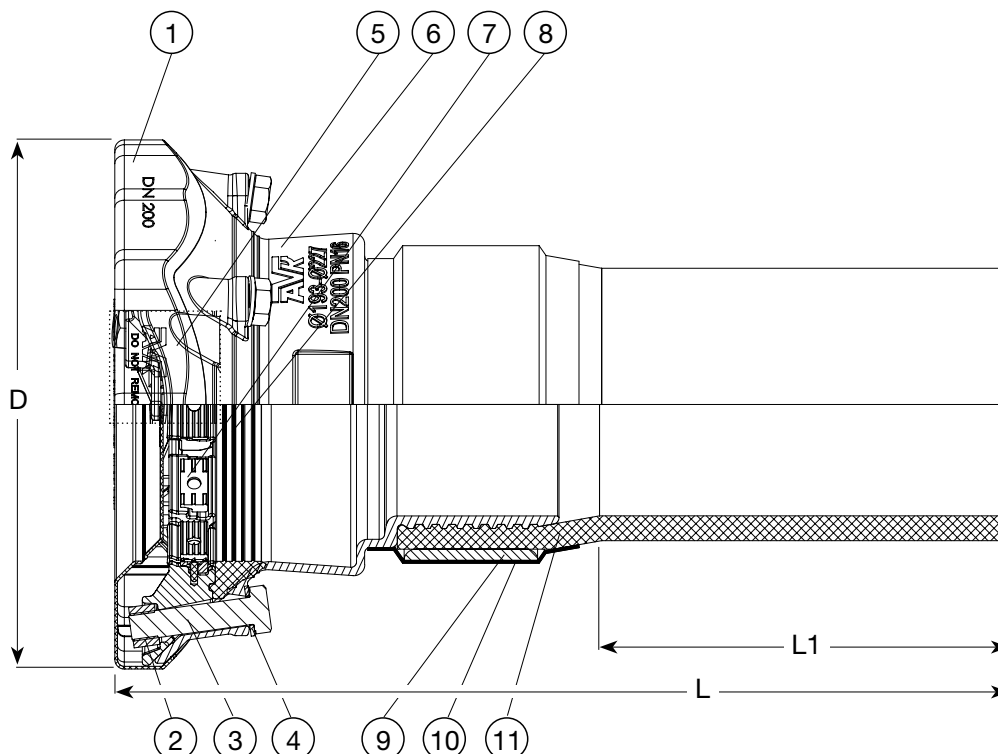
# Supa Maxi™ Transition Coupling

## Specification

- PN10 / PN16
- Ductile Iron
- EN 14525
- DN50-300



Code	DN/Ø	T	PN	D	L	L1	Weight	Delivery Code	Gross Price £ GBP
	mm	mm	Bar	mm	mm	mm	Kg		
635-071-00-266	50 - 63	48 - 71	10	200	540	300	4.5	C	POA
635-091-00-266	65 - 75	69 - 91	10	226	552	250	5.6	C	POA
635-105-00-266	80 - 90	82 - 106	10	235	533	250	7.5	C	POA
635-106-00-266	80 - 110	82 - 106	10	235	543	255	6	C	POA
635-133-00-266	100 - 110	104 - 133	10	268	547	250	10	C	POA
635-161-00-266	125 - 160	132 - 161	10	285	625	325	16	C	POA
635-188-00-266	150 - 160	159 - 188	10	340	644	325	18	C	POA
635-227-00-266	200 - 200	193 - 227	10	389	648	255	27	C	POA
635-257-00-266	225 - 250	224 - 257	10	437	788	340	49	C	POA
635-301-00-266	250 - 250	266 - 301	10	476	784	340	49	C	POA
635-356-00-266	300 - 315	314 - 356	10	545	784	355	64	C	POA
635-071-00-166	50 - 63	48 - 71	16	200	540	300	4.5	C	POA
635-091-00-166	65 - 75	69 - 91	16	226	552	250	5.6	C	POA
635-105-00-166	80 - 90	82 - 106	16	235	533	250	7.5	C	POA
635-106-00-166	80 - 110	82 - 106	16	235	543	255	6	C	POA
635-133-00-166	100 - 110	104 - 133	16	268	547	250	10	C	POA
635-161-00-166	125 - 159	132 - 159	16	285	625	325	16	C	POA
635-188-00-166	150 - 159	159 - 188	16	340	644	325	18	C	POA
635-227-00-166	200 - 200	193 - 227	16	389	648	255	27	C	POA
635-257-00-166	225 - 250	224 - 257	16	437	788	340	49	C	POA
635-301-00-166	250 - 250	266 - 301	16	476	784	340	49	C	POA
635-356-00-166	300 - 315	314 - 356	16	545	784	355	64	C	POA

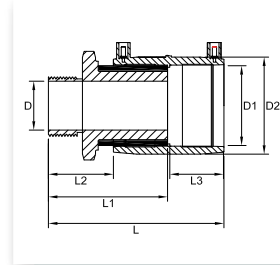




# Male Transition Coupler

## Specification

- PE100
- Water PN16
- Gas 10 Bar
- Thread BSPT
- Material - Coated CW617N Brass
- d25x3/4" - 63x2"

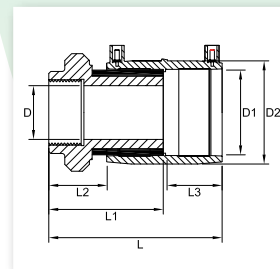


4mm Pin Fitting Code	Fitting Size	L	L1	L2	L3	D	D1	D2	Fusion Time	Cooling Time	Weight	Box Quantity	Box Size (W X L X D)	Delivery Code	Gross Price
ZCBKHFA25X0.8	25 x 3/4"	138.5	99	61.5	37.5	3/4	25	33.5	30	3	0.159	50	295 X 485 X 199	C	46.49
ZCBKHFA32X0.5	32 x 1/2"	170.0	100	62.5	37.5	1/2	32	43.0	45	3	0.38	50	295 X 485 X 199	C	111.09
ZCBKHFA32X0.8	32 x 3/4"	138.5	99	61.5	37.0	3/4	32	34.0	30	3	0.18	50	295 X 485 X 199	C	47.29
ZCBKHFA32X1	32 x 1"	149.5	110	72.5	38	1	32	43.0	45	3	0.24	40	295 X 485 X 199	A	58.09
ZCBKHFA32X1.3	32 x 1 1/4"	166.0	121	75.0	43	1 1/4	32	44.0	50	5	0.35	30	295 X 485 X 199	C	74.86
ZCBKHFA32X1.5	32 x 1 1/2"	165.5	134	74.5	41	1 1/2	32	44.0	60	5	0.45	24	295 X 485 X 199	C	85.13
ZCBKHFA40X1	40 x 1"	155.0	110	64.0	43	1	40	44.0	50	5	0.255	40	295 X 485 X 199	C	53.81
ZCBKHFA40X1.3	40 x 1 1/4"	167.0	121	77.0	44	1 1/4	40	51.5	40	5	0.36	25	295 X 485 X 199	A	74.15
ZCBKHFA40X1.5	40 x 1 1/2"	179.0	134	88.0	43	1 1/2	40	52.0	60	5	0.45	24	295 X 485 X 199	C	85.22
ZCBKHFA50X1	50 x 1"	160.0	110	69.0	41	1	50	44.0	60	5	0.28	30	295 X 485 X 199	C	60.59
ZCBKHFA50X1.3	50 x 1 1/4"	158.0	121	67.0	43	1 1/4	50	44.0	60	5	0.37	30	295 X 485 X 199	C	75.58
ZCBKHFA50X1.5	50 x 1 1/2"	181.0	134	90.0	44	1	50	61.5	90	5	0.47	18	295 X 485 X 199	A	84.77
ZCBKHFA50X2	50 x 2"	200.0	150	98.0	48	2	50	62.0	120	10	0.71	12	295 X 485 X 199	C	120.91
ZCBKHFA63X1.3	63 x 1 1/4"	171.0	121	69.0	45	1 1/4	63	78.0	70	5	0.42	15	295 X 485 X 199	C	75.49
ZCBKHFA63X1.5	63 x 1 1/2"	184.0	134	82.0	48	1 1/2	63	78.0	120	10	0.50	15	295 X 485 X 199	B	85.48
ZCBKHFA63X2	63 x 2"	203.0	150	101.0	49	2	63	78.0	35	3	0.71	12	295 X 485 X 199	A	119.03

# Female Transition Coupler

## Specification

- PE100
- Water PN16
- Gas 10 Bar
- Thread BSPP
- Material - Coated CW617N Brass
- d25x3/4" - 63x2"



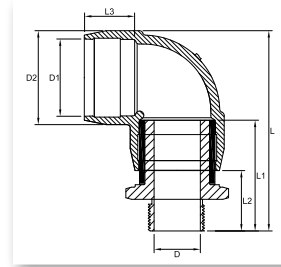
4mm Pin Fitting Code	Fitting Size	L	L1	L2	L3	D	D1	D2	Fusion Time	Cooling Time	Weight	Box Quantity	Box Size (W X L X D)	Delivery Code	Gross Price
XCBKHFA25X0.8	25 x 3/4"	130.5	91	53.5	37.5	3/4	25	33.5	30	3	0.18	50	295 X 485 X 199	C	45.24
XCBKHFA32X0.8	32 x 3/4"	131.0	91	54.0	37.0	3/4	32	34.0	30	3	0.21	50	295 X 485 X 199	C	46.13
XCBKHFA32X1	32 x 1"	139.5	100	62.5	38	1	32	43.0	45	3	0.25	40	295 X 485 X 199	C	54.34
XCBKHFA40X1	40 x 1"	148.0	100	57.0	43	1	40	44.0	50	5	0.28	40	295 X 485 X 199	C	56.48
XCBKHFA40X1.3	40 x 1 1/4"	155.0	109	65.0	44	1 1/4	40	51.5	40	5	0.39	25	295 X 485 X 199	C	70.49
XCBKHFA40X1.5	40 x 1 1/2"	172.0	124	81.0	43	1 1/2	40	52.0	60	5	0.53	24	295 X 485 X 199	C	87.71
XCBKHFA50X1.3	50 x 1 1/4"	157.0	109	66.0	43	1 1/4	50	44.0	60	5	0.38	25	295 X 485 X 199	C	71.83
XCBKHFA50X1.5	50 x 1 1/2"	171.0	124	80.0	44	1	50	61.5	90	5	0.50	18	295 X 485 X 199	C	87.27
XCBKHFA50X2	50 x 2"	195.0	141	93.0	48	2	50	62.0	120	10	0.78	30	295 X 485 X 199	C	123.32
XCBKHFA63X1	63 x 1"	150.0	100	48.0	52	1	63	78.0	90	5	0.50	20	295 X 485 X 199	C	56.75
XCBKHFA63X1.5	63 x 1 1/2"	178.0	124	76.0	48	1 1/2	63	78.0	120	10	0.55	15	295 X 485 X 199	B	87.80
XCBKHFA63X2	63 x 2"	194.0	141	92.0	49	2	63	78.0	35	3	0.78	15	295 X 485 X 199	A	121.62



# Male Transition 90° Elbow

## Specification

- PE100
- Water PN16
- Gas 10 Bar
- Thread BSPT
- Material - Coated CW617N Brass
- d25x¾" - 63x2"

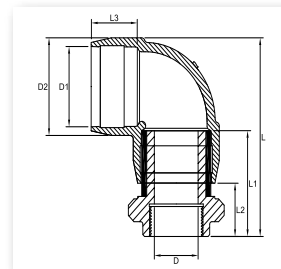


4mm Pin Fitting Code	Fitting Size	L	L1	L2	L3	D	D1	D2	Fusion Time	Cooling Time	Weight	Box Quantity	Box Size (W X L X D)	Delivery Code	Gross Price
	mm	mm	mm	mm	mm	inch	mm	mm	secs	mins	Kg		mm		£ GBP
ZEBKHFA25X900.8	25 x ¾"	131.0	99	55.0	44.0	¾	25	35.0	30	3	0.19	30	295 X 485 X 199	C	41.32
ZEBKHFA32X901	32 x 1"	154.0	110	70.0	40	1	32	44.0	60	5	0.28	36	295 X 485 X 199	C	65.23
ZEBKHFA40X901.3	40 x 1¼"	170.0	121	79.0	42	1¼	40	52.0	50	5	0.40	30	295 X 485 X 199	C	79.95
ZEBKHFA50X901.5	50 x 1½"	192.0	124	79.5	44.5	1½	50	63.0	90	5	0.54	15	295 X 485 X 199	C	90.93
ZEBKHFA63X902	63 x 2"	223.0	150	100.0	50	2	63	81.0	35	5	0.87	5	295 X 485 X 199	C	126.89

# Female Transition 90° Elbow

## Specification

- PE100
- Water PN16
- Gas 10 Bar
- Thread BSPP
- Material - Coated CW617N Brass
- d25x¾" - 63x2"



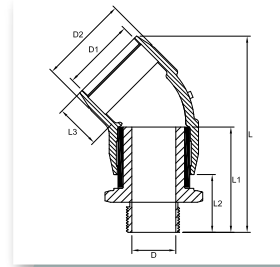
4mm Pin Fitting Code	Fitting Size	L	L1	L2	L3	D	D1	D2	Fusion Time	Cooling Time	Weight	Box Quantity	Box Size (W X L X D)	Delivery Code	Gross Price
	mm	mm	mm	mm	mm	inch	mm	mm	secs	mins	Kg		mm		£ GBP
XEBKHFA25X900.8	25 x ¾"	123.0	91	47.0	44.0	¾	25	35.0	30	3	0.31	40	295 X 485 X 199	C	40.35
XEBKHFA32X901	32 x 1"	144.0	100	60.0	40	1	32	44.0	60	5	0.30	36	295 X 485 X 199	C	61.39
XEBKHFA40X901.3	40 x 1¼"	158.0	109	67.0	42	1¼	40	52.0	50	5	0.52	30	295 X 485 X 199	C	52.97
XEBKHFA50X901.5	50 x 1½"	182.0	124	79.0	45	1½	50	63.0	90	5	0.65	30	295 X 485 X 199	C	93.42
XEBKHFA63X902	63 x 2"	214.0	141	91.0	50	2	63	81.0	35	5	0.95	10	295 X 485 X 199	C	130.54



# Male Transition 45° Elbow

## Specification

- PE100
- Water PN16
- Gas 10 Bar
- Thread BSPT
- Material - Coated CW617N Brass
- d32x1" - 63x2"

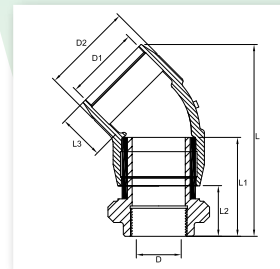


4mm Pin Fitting Code	Fitting Size	L	L1	L2	L3	D	D1	D2	Fusion Time	Cooling Time	Weight	Box Quantity	Box Size (W X L X D)	Delivery Code	Gross Price
	mm	mm	mm	mm	mm	inch	mm	mm	secs	mins	Kg		mm		£ GBP
ZEBKHFA32X451	32 x 1"	160.0	100	61.0	39.0	1	32	44.0	45	5	0.26	30	295 X 485 X 199	C	64.87
ZEBKHFA50X451.5	50 x 1½"	203.5	124	79.5	44.5	1½	50	64.0	90	5	0.54	30	295 X 485 X 199	C	64.34
ZEBKHFA63X452	63 x 2"	228.0	141	91.0	50	2	63	78.5	35	5	0.78	12	295 X 485 X 199	C	124.66

# Female Transition 45° Elbow

## Specification

- PE100
- Water PN16
- Gas 10 Bar
- Thread BSPP
- Material - Coated CW617N Brass
- d32x1" - 63x2"



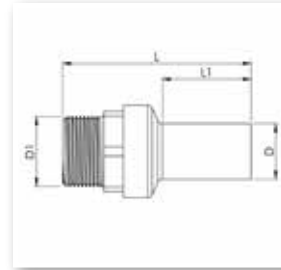
4mm Pin Fitting Code	Fitting Size	L	L1	L2	L3	D	D1	D2	Fusion Time	Cooling Time	Weight	Box Quantity	Box Size (W X L X D)	Delivery Code	Gross Price
	mm	mm	mm	mm	mm	inch	mm	mm	secs	mins	Kg		mm		£ GBP
XEBKHFA32X451	32 x 1"	160.0	100	61.0	39.0	1	32	44.0	45	5	0.55	30	295 X 485 X 199	C	61.12
XEBKHFA40X451.3	40 x 1¼"	175.5	109	67.5	41.5	1¼	40	53.00	50	5	0.43	30	295 X 485 X 199	C	76.02
XEBKHFA50X451.5	50 x 1½"	203.5	124	79.5	44.5	1½	50	64.0	90	5	0.34	30	295 X 485 X 199	C	92.98
XEBKHFA63X452	63 x 2"	228.0	141	91.0	50	2	63	78.5	35	5	0.78	20	295 X 485 X 199	C	128.31



# Transition Adaptor | Brass (not coated) | Male

## Specification

- PE100
- SDR11
- Water PN16
- Gas 10 Bar
- Thread BSPT
- Material - Grade of brass CW617N
- d20x1/2" - 125x4"

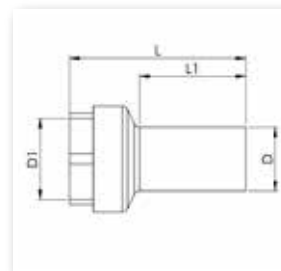


Code	D-D1	L	L1	Weight	Box Quantity	Delivery Code	Gross Price
	mm	mm	mm	Kg			£ GBP
<b>PE100   SDR11   Water PN16   Gas 10 Bar   Male</b>							
AX67100	20 X 1/2"	92	38	0.11	70	C	29.11
AX67101	25 x 3/4"	99	40	0.12	50	B	29.11
AX67102	32 x 1"	110	44	0.18	30	A	39.33
AX67103	40 x 1 1/4"	121	49	0.27	15	A	53.78
AX67104	50 x 1 1/2"	134	54	0.37	10	A	63.48
AX67105	63 x 2"	150	63	0.59	6	A	97.33
AX67106	75 x 2 1/2"	165	73	0.89	15	B	164.51
AX67107	90 x 3"	181	82	1.14	10	A	200.26
AX67108	110 x 4"	194	84	1.86	6	B	344.31
AX67109	125 x 4"	202	92	3.00	4	B	603.62

# Transition Adaptor | Brass (not coated) | Female

## Specification

- PE100
- SDR11
- Water PN16
- Gas 10 Bar
- Thread BSPP
- Material - Grade of brass CW617N
- d20x1/2" - 125x4"



Code	D-D1	L	L1	Weight	Box Quantity	Delivery Code	Gross Price
	mm	mm	mm	Kg			£ GBP
<b>PE100   SDR11   Water PN16   Gas 10 Bar   Female</b>							
AX67110	20 X 1/2"	82	38	0.12	70	C	27.84
AX67111	25 x 3/4"	91	40	0.15	50	C	27.84
AX67112	32 x 1"	100	44	0.20	30	A	35.64
AX67113	40 x 1 1/4"	109	49	0.32	15	A	50.20
AX67114	50 x 1 1/2"	124	54	0.38	10	B	66.01
AX67115	63 x 2"	141	63	0.60	6	A	99.76
AX67116	75 x 2 1/2"	163	73	0.90	15	B	171.47
AX67117	90 x 3"	181	82	1.15	10	B	231.16
AX67118	110 x 4"	190	84	1.87	6	C	344.31
AX67119	125 x 4"	165	91	1.92	6	C	615.75

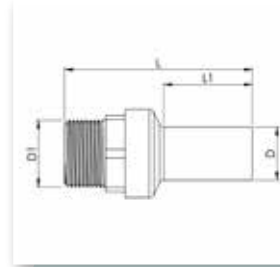




# Transition Adaptor | Brass DZR | Male

## Specification

- PE100
- SDR11
- Water PN16
- Gas 10 Bar
- Thread BSPT
- Material - Grade of brass CW511L
- d20x1/2" - 125x4"

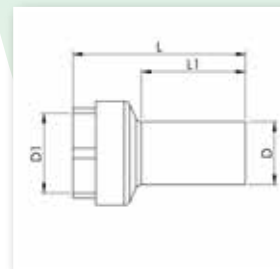


Code	D-D1	L	L1	Weight	Box Quantity	Delivery Code	Gross Price
	mm	mm	mm	Kg			£ GBP
<b>PE100   SDR11   Water PN16   Gas 10 Bar   Male</b>							
AX67141	20 X 1/2"	92	38	0.11	70	C	23.52
AX67143	25 x 3/4"	99	40	0.12	50	C	29.32
AX67144	32 x 1"	110	44	0.18	30	C	32.59
AX67145	40 x 1 1/4"	121	49	0.27	15	C	47.45
AX67146	50 x 1 1/2"	134	54	0.37	10	C	71.18
AX67147	63 x 2"	150	63	0.59	6	C	90.80
AX67148	75 x 2 1/2"	165	73	0.89	15	C	157.02
AX67149	90 x 3"	181	82	1.14	10	C	231.26
AX67150	110 x 4"	194	84	1.86	6	C	340.93
AX67151	125 x 4"	202	92	3.00	4	C	613.32

# Transition Adaptor | Brass DZR | Female

## Specification

- PE100
- SDR11
- Water PN16
- Gas 10 Bar
- Thread BSPP
- Material - Grade of brass CW511L
- d20x1/2" - 125x4"



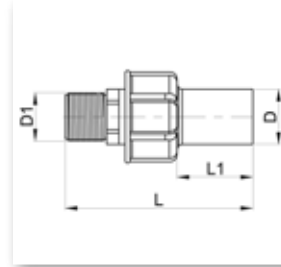
Code	D-D1	L	L1	Weight	Box Quantity	Delivery Code	Gross Price
	mm	mm	mm	Kg			£ GBP
<b>PE100   SDR11   Water PN16   Gas 10 Bar   Female</b>							
AX67152	20 X 1/2"	82	38	0.12	70	C	29.74
AX67154	25 x 3/4"	91	40	0.15	50	C	31.00
AX67155	32 x 1"	100	44	0.20	30	C	34.59
AX67156	40 x 1 1/4"	109	49	0.32	15	C	53.57
AX67157	50 x 1 1/2"	124	54	0.38	10	C	63.69
AX67158	63 x 2"	141	63	0.60	6	C	102.61
AX67159	75 x 2 1/2"	163	73	0.90	15	C	163.98
AX67160	90 x 3"	181	82	1.15	10	C	220.93
AX67161	110 x 4"	190	84	1.87	6	C	379.32
AX67162	125 x 4"	165	91	1.92	6	C	625.66



# Transition Adaptor | Stainless Steel | Male

## Specification

- PE100
- SDR11
- Water PN16
- Gas 10 Bar
- Thread BSPT
- Material - Stainless Steel AISI G316
- d20x1/2" - 63x2"

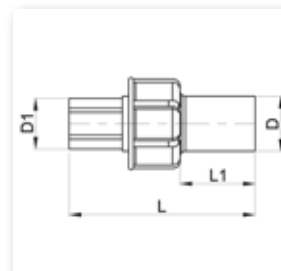


Code	D-D1	L	L1	Weight	Box Quantity	Delivery Code	Gross Price
	mm	mm	mm	Kg			£ GBP
<b>PE100   SDR11   Water PN16   Gas 10 Bar   Male</b>							
AX67131	20 X 1/2"	85	38	0.10	70	C	55.05
AX67132	25 x 3/4"	95	40	0.11	50	C	57.68
AX67133	32 x 1"	105	44	0.17	30	C	66.12
AX67134	40 x 1 1/4"	115	49	0.25	15	C	81.94
AX67135	50 x 1 1/2"	130	54	0.34	10	B	112.20
AX67136	63 x 2"	148	63	0.53	6	B	132.03

# Transition Adaptor | Stainless Steel | Female

## Specification

- PE100
- SDR11
- Water PN16
- Gas 10 Bar
- Thread BSPP
- Material - Stainless Steel AISI G316
- d20x1/2" - 63x2"



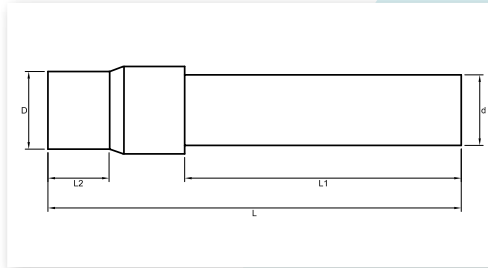
Code	D-D1	L	L1	Weight	Box Quantity	Delivery Code	Gross Price
	mm	mm	mm	Kg			£ GBP
<b>PE100   SDR11   Water PN16   Gas 10 Bar   Female</b>							
AX67120	20 X 1/2"	82	38	0.10	70	C	49.25
AX67137	25 x 3/4"	91	40	0.11	50	C	60.32
AX67121	32 x 1"	100	44	0.17	30	B	65.91
AX67138	40 x 1 1/4"	109	49	0.25	15	C	87.11
AX67139	50 x 1 1/2"	124	54	0.34	10	C	123.70
AX67140	63 x 2"	141	63	0.53	6	B	156.71



# PE - Steel Transition Piece | Weldable end

## Specification

- PE100
- SDR 11 - Water PN16 / Gas upon request
- SDR 17 - Water PN10 / Gas upon request
- d25x¾" - 400x16"

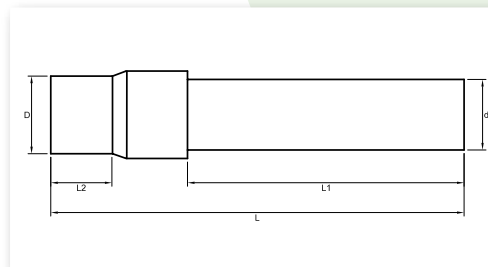


Code	D-d	L	L1	L2	Weight	Box Quantity	Delivery Code	Gross Price
	mm	mm	mm	mm	Kg			
<b>PE100   SDR11   Water PN16   Gas upon request</b>								
PESBKH25X0.75W	25 x ¾"	381	194	126	0.55	10	C	56.42
PESBKH32X1W	32 x 1"	390	194	135	0.61	10	C	63.59
PESBKH40X1.3W	40 x 1¼"	407	193	151	0.98	4	C	75.61
PESBKH50X1.5W	50 x 1½"	426	190	169	1.20	4	C	88.58
PESBKH63X2W	63 x 2"	448	190	190	1.62	4	C	106.30
PESBKH75X2.5W	75 x 2½"	545	130	310	2.95	2	C	262.69
PESBKH90X3W	90 x 3"	560	150	310	3.95	2	C	285.15
PESBKH110X4W	110 x 4"	580	160	310	7.05	2	C	419.60
PESBKH125X4W	125 x 4"	580	160	310	7.30	2	C	433.31
PESBKH140X5W	140 x 5"	580	160	310	8.00	1	C	712.13
PESBKH160X6W	160 x 6"	600	160	310	10.50	1	C	784.90
PESBKH180X6W	180 x 6"	600	160	310	11.00	1	C	819.28
PESBKH200X8W	200 x 8"	620	150	310	17.50	1	C	1,237.61
PESBKH225X8W	225 x 8"	600	130	310	18.00	1	C	1,276.74
PESBKH250X10W	250 x 10"	630	180	300	30.50	1	C	2,545.36
PESBKH280X10W	280 x 10"	-	-	-	31.00	1	C	2,666.63
PESBKH315X12W	315 x 12"	780	180	315	42.42	9	C	3,284.28
<b>PE100   SDR17   Water PN10   Gas upon request</b>								
PESBKHV200X8W	200 x 8"	750	114	315	21.78	1	C	1,183.73
PESBKHV225X8W	225 x 8"	620	132	315	23.54	19	C	1,285.28
PESBKHV250X10W	250 x 10"	920	130	315	44.06	1	C	2,796.87
PESBKHV315X12W	315 x 12"	-	-	-	46.50	1	C	3,038.46
PESBKHV355X14W	355 x 14"	-	-	-	60.00	1	C	5,069.09
PESBKHV400X16W	400 x 16"	-	-	-	83.20	1	C	6,136.19

# PE - Steel Transition Piece | Threaded end

## Specification

- PE100
- SDR11
- Water PN16
- Gas upon request
- d25x¾" - 125x4"



Code	D-D1	L	L1	L2	Weight	Box Quantity	Delivery Code	Gross Price
	mm	mm	mm	mm	Kg			
<b>PE100   SDR11   Water PN16   Gas upon request</b>								
PESBKH25X0.75T	25 x ¾"	432	67	300	0.64	35	C	82.25
PESBKH32X1T	32 x 1"	442	75	300	0.88	20	C	93.85
PESBKH40X1.3T	40 x 1¼"	446	79	300	1.18	12	C	98.71
PESBKH50X1.5T	50 x 1½"	471	83	300	1.49	9	C	107.14
PESBKH63X2T	63 x 2"	483	90	300	2.08	6	C	130.45
PESBKH75X2.5T	75 x 2½"	522	105	300	3.01	4	C	330.81
PESBKH90X3T	90 x 3"	544	121	300	3.94	2	C	400.41
PESBKH110X4T	110 x 4"	556	123	300	5.91	5	C	496.16
PESBKH125X4T	125 x 4"	590	135	300	6.75	4	C	536.76

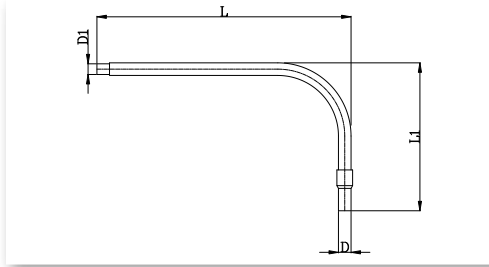
Note: Every effort has been made to ensure the information in this brochure is correct at the date of issue. Fusion operates a policy of continuous product improvement and range extension and, therefore, reserves the right to modify product specifications in line with market requirements. All dimensions in this catalogue are nominal. Occasionally, box quantities may differ from catalogue information. For more information visit our website [www.fusiongroup.com](http://www.fusiongroup.com)



# PE - Steel Curved Transition Piece Weldable end

## Specification

- PE100
- SDR11
- Water PN16
- Gas upon request
- d25 x ¾" - 63 x 2"

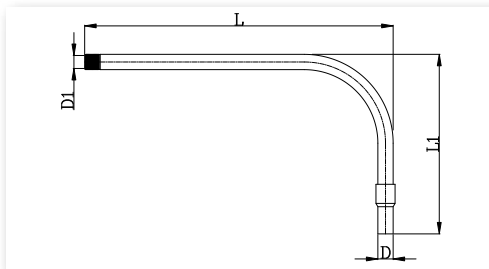


Code	D-D1 mm	L mm	L1 mm	Weight Kg	Box Quantity	Delivery Code	Gross Price £ GBP
<b>PE100   SDR11   Water PN16   Gas upon request</b>							
PESBKH25X0.75WC	25 x ¾"	800	500	0.65	150	C	194.46
PESBKH32X1WC	32 x 1"	800	500	0.95	90	C	212.49
PESBKH40X1.3WC	40 x 1¼"	800	550	1.25	50	C	233.58
PESBKH50X1.5WC	50 x 1½"	800	600	1.45	50	C	264.06
PESBKH63X2WC	63 x 2"	800	650	2.15	30	C	325.01

# PE - Steel Curved Transition Piece Threaded end

## Specification

- PE100
- SDR11
- Water PN16
- Gas upon request
- d25 x ¾" - 63 x 2"



Code	D-D1 mm	L mm	L1 mm	Weight Kg	Box Quantity	Delivery Code	Gross Price £ GBP
<b>PE100   SDR11   Water PN16   Gas upon request</b>							
PESBKH25X0.75TC	25 x ¾"	800	500	0.65	150	C	206.06
PESBKH32X1TC	32 x 1"	800	500	0.95	90	C	224.93
PESBKH40X1.3TC	40 x 1¼"	800	550	1.25	50	C	248.45
PESBKH50X1.5TC	50 x 1½"	800	600	1.45	50	C	281.46
PESBKH63X2TC	63 x 2"	800	650	2.15	30	C	345.26



# Mains to Meter Factory Entry Elbow

Specification

- PN5.5 (SDR11) / PN2 (SDR17)
- SDR11 / SDR17 (see table below)
- GIS/PL3
- PE x 001 - Screwed end 1½" and 2" (40 and 63mm)
- PE x 002 - Plain end 3" and above (90, 125 and 180mm)
- d40 - 125

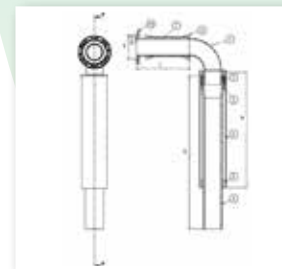


Code	PE	SDR	B1 (Through Wall)	C (PE80 Length)	D (GRP Length)	E (Steel Pipe)	B2 (Through Wall) Pe Pipe DN	Weight	Delivery Code	Gross Price
	mm		mm	mm	mm	mm	mm	Kg		£ GBP
217-0401-345-10-090	40	11	345	1	0.9	48.1	63	6	C	492.26
217-0401-500-10-090	40	11	500	1	0.9	48.1	63	7	C	507.46
217-0632-150-10-090	63	11	150	1	0.9	60.3	75	7	C	613.81
217-0632-345-10-090	63	11	345	1	0.9	60.3	75	9	C	674.58
217-0632-500-10-090	63	11	500	1	0.9	60.3	75	10	C	735.36
217-0632-500-20-090	63	11	500	2	1.9	60.3	75	13	C	941.98
217-0632-610-10-090	63	11	610	1	0.9	60.3	75	11	C	796.13
217-0903-345-10-075	90	11	345	1	0.75	88.9	110	14	C	1,185.07
217-0903-500-20-150	90	11	500	2	1.5	88.9	110	21	C	1,610.48
217-0903-610-20-150	90	11	610	2	1.5	88.9	110	22	C	1,732.03
217-0903-610-10-075	90	11	610	1	0.75	88.9	110	19	C	1,367.39
217-1254-345-10-075	125	11	345	1	0.75	114.3	125	24	C	1,975.12
217-1254-610-10-075	125	11	610	1	0.75	114.3	125	30	C	2,947.48
217-1254-610-20-150	125	11	610	2	1.5	114.3	125	38.5	C	3,798.30

# Mains to Meter Factory Entry Elbow with Split Flange Ring

Specification

- PN5.5 (SDR11) / PN2 (SDR17)
- SDR11 / SDR17 (see table below)
- GIS/PL3
- d90 - 180



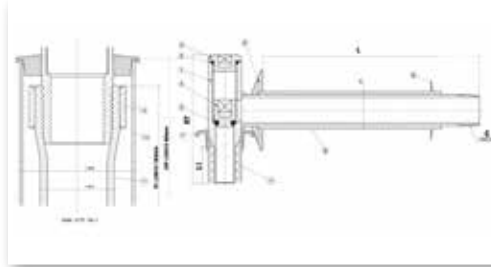
Code	PE	SDR	D	DN	A (GRP Length)	B (Length)	C (Through Wall Length)	Weight	Delivery Code	Gross Price
	mm		mm	mm	mm	mm	mm	Kg		£ GBP
217-0903-345-10-07501	90	11	134	80	750	1000	345	16	C	1,853.57
217-0903-345-20-15001	90	11	134	80	1500	2000	345	16	C	2,400.53
217-0903-500-20-15001	90	11	134	80	1500	2000	500	23	C	2,491.68
217-0903-610-20-15001	90	11	134	80	1500	2000	610	24	C	2,643.62
217-1254-345-10-07501	125	11	158	100	750	1000	345	27	C	2,704.39
217-1254-610-10-07501	125	11	158	100	750	1000	610	33	C	2,947.48
217-1254-610-20-15001	125	11	158	100	1500	2000	610	41	C	3,798.30
217-1806-345-10-07521	180	17	215	150	750	1000	345	39	C	4,011.00
217-1806-610-10-07521	180	17	215	150	750	1000	610	46	C	4,314.86
217-1806-610-20-15021	180	17	215	150	1500	2000	610	59	C	5,591.09



# Mains to Meter Building Entry Tee

## Specification

- PN4
- GIS/PL3
- DN20 - 63

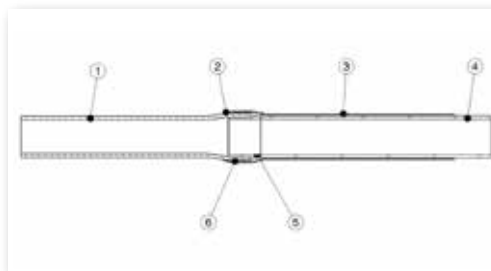


Code	DN	Through Wall	L	H7	L1	DØ	G Thread	PE Length	GRP Length	Weight	Delivery Code	Gross Price
	mm	mm	mm	mm	mm	mm	mm	mm	mm	Kg		£ GBP
219-200-00	20	150	183	70	36	32	R¾"	0	0	0.7	C	94.20
219-200-01	20	345	378	70	36	32	R¾"	0	0	1.1	C	106.36
219-200-02	20	500	533	70	36	32	R¾"	0	0	1.5	C	118.51
219-250-00	25	150	183	70	36	32	R¾"	0	0	0.8	C	121.55
219-250-01	25	345	378	70	36	32	R¾"	0	0	1.1	C	133.70
219-250-02	25	500	533	70	36	32	R¾"	0	0	1.5	C	145.85
219-321-00	32	150	189	86	36	40	R1"	0	0	1.2	C	136.74
219-321-01	32	345	384	86	36	40	R1"	0	0	1.6	C	148.89
219-321-02	32	500	533	86	36	40	R1"	0	0	2.1	C	161.04
219-321-03	32	610	649	86	36	40	R1"	0	0	2.5	C	173.20
219-632-00-001	63	150	196	125	50	75	R2"	1000	900	4.0	C	650.27
219-632-01-001	63	345	391	125	50	75	R2"	1000	900	5.4	C	668.50
219-632-02-001	63	500	546	125	50	75	R2"	1000	900	6.8	C	686.74
219-632-03-001	63	610	646	125	50	75	R2"	1000	900	7.8	C	704.96

# Mains to Meter Below Ground Entry Fitting

## Specification

- PN5.5 (SDR11) / PN2 (SDR17)
- GIS/PL3
- PE x 001 - Screwed end from ¾" to 2"
- PE x 002 - Plain end from 3" to 6"
- d25 - 180



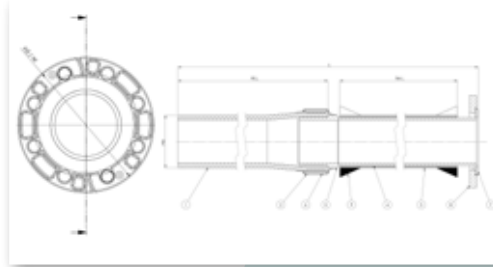
Code	Range	Spigot Type	Diameter of Through Wall PE	Weight	Delivery Code	Gross Price
	mm	mm		Kg		£ GBP
218-0250-050-05-0-1	25mm SDR11 x R¾"	0.5M x 0.5M PE80	40	3.6	C	121.55
218-0321-050-05-0-1	32mm SDR11 x R1"	0.5M x 0.5M PE80	50	4.1	C	151.94
218-0632-050-05-0-1	63mm SDR11 x R2"	0.5M x 0.5M PE80	75	5.3	C	577.35
218-0903-050-05	90mm SDR11 x 3" Plain	0.5M x 0.5M PE80	110	10	C	820.44
218-0903-075-12	90mm SDR11 x 3" Plain	0.75M x 1.25M PE80	110	16	C	1,002.76
218-1254-050-10	125mm SDR11 x 4" Plain	0.5M x 1.0M PE80	125	19	C	1,337.00
218-1254-075-12	125mm SDR11 x 4" Plain	0.75M x 1.25M PE80	125	25	C	1,580.09
218-1254-100-15	125mm SDR11 x 4" Plain	1.0M x 1.5M PE80	125	31	C	1,792.80
218-1806-050-10-2	180mm SDR17 x 6" Plain	0.5M x 1.0M PE80	200	32	C	2,096.67
218-1806-075-12-2	180mm SDR17 x 6" Plain	0.75M x 1.25M PE80	200	42	C	2,886.71
218-1806-100-15-2	180mm SDR17 x 6" Plain	1.0M x 1.5M PE80	200	52	C	3,190.57
218-1806-120-15-2	180mm SDR17 x 6" Plain	1.2M x 1.5M PE80	200	59	C	3,433.67



# Mains to Meter Below Ground Entry Fitting with Split Flange

## Specification

- PN5.5 (SDR11) / PN2 (SDR17)
- GIS/PL3
- d90 - 180

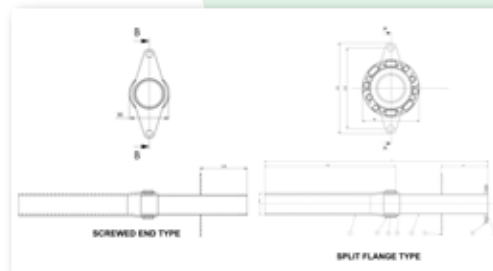


Code	Connection DN	H3	L	Pipe Diameter	PE Length	SDR	L Through Wall	W	Weight	Delivery Code	Gross Price
	mm	mm	mm	mm	mm	mm	mm	mm	Kg		£ GBP
218-0903-050-05-02	80	200	1027	90	500	11	450	200	14	C	1,276.23
218-0903-075-10-02	80	200	1777	90	1000	11	700	200	19	C	1,458.55
218-1254-050-10-02	100	220	1075	125	1000	11	450	220	21	C	2,400.53
218-1254-075-12-02	100	220	2025	125	1250	11	700	220	27	C	2,643.62
218-1254-100-15-02	100	220	2525	125	1500	11	950	220	33	C	2,066.27
218-1806-050-10-22	150	285	1528	180	1000	17	0.45	285	33	C	3,464.05
218-1806-075-12-22	150	285	2028	180	1250	17	700	285	43	C	3,798.30
218-1806-100-15-22	150	285	2528	180	1500	17	950	285	53	C	4,132.55
218-1806-120-15-22	150	285	2728	180	1500	17	1150	285	60	C	4,314.86

# Mains to Meter Module Riser Fitting with Split Flange

## Specification

- PN5.5 (SDR11) / PN2 (SDR17)
- GIS/PL3
- d25 - 250



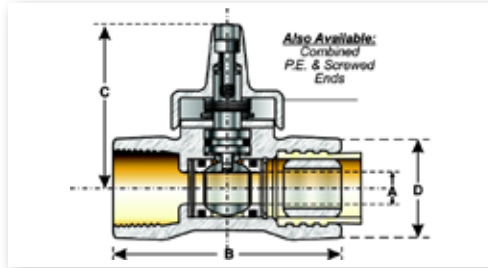
Code	Connection DN	Dh	H3	L	L6	Pipe Dia	PE Length	SDR	W	Delivery Code	Gross Price
	mm	mm	mm	mm	mm	mm	mm	mm	mm		£ GBP
218-0250-050-07-0102	R3/4	164	200	1276	170	25	750	11	46	C	332.56
218-0321-050-07-0102	R1	164	200	1276	170	32	750	11	52	C	408.89
218-0632-050-07-0202	50	214	250	1276	170	63	750	11	165	C	1,002.76
218-0903-050-07-0202	80	269	310	1277	295	90	750	11	200	C	1,643.99
218-0904-050-07-0202	100	309	350	1277	269	90	750	11	220	C	1,686.21
218-1254-050-07-0202	100	309	350	1275	269	125	750	11	220	C	1,673.02
218-1256-050-07-0202	150	409	450	1275	231	125	750	11	285	C	1,884.97
218-1806-050-07-2202	150	409	450	1278	231	180	750	17	285	C	2,200.90
218-1808-050-07-2202	200	509	550	1278	256	180	750	17	340	C	2,275.48
218-2508-050-07-2202	200	509	550	1288	256	250	750	17	340	C	3,275.63
218-2509-050-07-2202	250	609	650	1288	218	250	750	17	405	C	3,963.50



# Ball Valve | PE Pipe Ends

## Specification

- PN4
- Ductile Iron Body / PE Pipe Ends
- Stainless Steel Ball
- GIS/V4
- GIS/PL3
- DN32 - 63

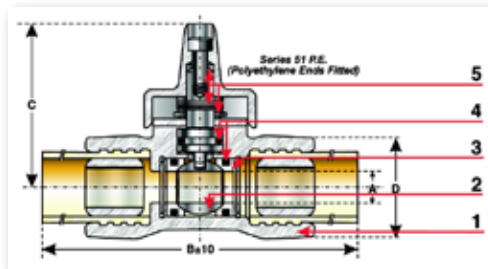


Code	DN	A	B	C	Weight	Delivery Code	Gross Price
	mm	mm	mm	mm	Kg		£ GBP
451-032-05-7213001	32	14.5	302	73	1.3	C	458.40
451-063-05-7213001	63	30	436	84	3.7	C	830.61

# Ball Valve | PE to Screw Ends

## Specification

- PN4
- Ductile Iron Body / PE to Screw Ends
- Stainless Steel Ball
- GIS/V4
- GIS/PL3
- DN 1" to 2" / 25 - 63



Code	DN	A	B	C	D	Weight	Delivery Code	Gross Price
	mm	mm	mm	mm	mm	Kg		£ GBP
451-323-05-7310001	1"x32	14.5	201	73	43	1.3	C	179.31
451-323-05-7413001	1"x25	11.5	197	72	35	0.9	C	308.43
451-636-05-7311001	2"x63	30	291	84	71	3.7	C	342.10
451-636-05-7413001	2"x63	30	291	84	71	3.0	C	614.57

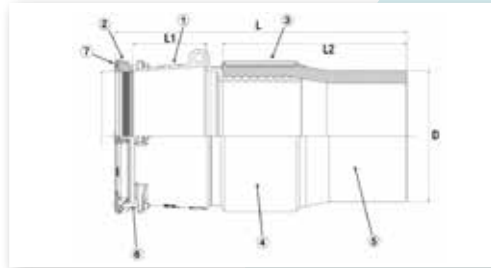




# Universal Transition Coupler

## Specification

- PN2
- GIS/PL3
- Ductile Iron / PE Tail
- d90 - 355

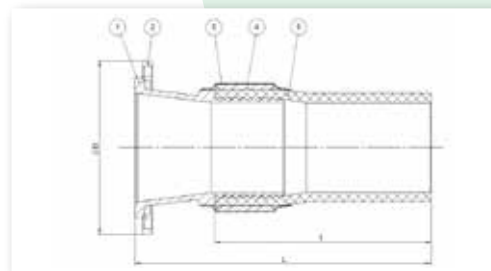


Code	D (Size Range)	Range	L	L1	L2	Weight	Delivery Code	Gross Price
	mm	mm	mm	mm	mm	Kg		£ GBP
604-106-090-1661000	90mm SDR17x3"	84-106	732	161	500	7.0	C	668.50
604-133-090-1661000	90mm SDR17x4"	109-133	739	164	500	9.0	C	850.81
604-133-125-1661000	125mm SDR17x4"	109-133	744	164	500	11	C	911.59
604-183-125-1661000	125mm SDR17x6"	157-183	754	170	500	16	C	1,124.31
604-183-180-1661000	180mm SDR17x6"	157-183	754	170	500	20	C	1,185.07
604-242-250-1661000	250mm SDR17x8"	218-242	769	180	500	43	C	2,248.59
604-292-250-1661000	250mm SDR17x10"	266-292	782	190	500	47	C	2,522.07
604-292-315-1661000	315mm SDR17x10"	266-292	774	190	500	59	C	2,643.62
604-327-315-1661000	315mm SDR17x12"	301-327	787	195	500	62	C	3,099.41
604-350-315-1661000	315mm SDR17x12"	301-327	792	200	500	64	C	3,312.12
604-327-355-1661000	355mm SDR17x12"	324-350	787	195	500	80	C	4,922.60
604-350-355-1661000	355mm SDR17x12"	327-301	792	200	500	82	C	5,135.30

# PE100 Flange Adaptor

## Specification

- PN7
- PN16 flange drillings (ASA 150 Optional)
- Ductile Iron / PE100 Tail
- GIS/PL3
- d80-350



Code	DN	PE Pipe Size	D	df	L	I	Weight	Delivery Code	Gross Price
	mm	mm	mm	mm	mm	mm	Kg		£ GBP
39-090-50-011203001	80	90	200	35	636	500	9.0	C	972.36
39-090-50-021203001	100	90	220	35	641	500	10	C	1,276.23
39-125-50-021203001	100	125	220	35	637	500	12	C	1,397.77
39-125-50-031203001	150	125	285	36	651	500	18	C	1,944.73
39-180-50-031203001	150	180	285	36	657	500	20	C	2,309.36
39-250-50-041203101	200	250	340	40	1157	1000	46	C	3,494.44
39-250-50-051203101	200	250	400	40	1185	1000	51	C	4,406.03
39-315-50-051203101	250	315	400	40	1185	1000	64	C	4,740.27
39-315-50-061203101	300	315	455	43	1192	1000	75	C	5,955.73
39-355-50-061203101	300	355	455	43	1192	1000	84	C	6,715.39
39-315-50-071203101	350	315	505	45	1196	1000	82	C	6,806.55
39-355-50-071203101	350	355	505	45	1196	1000	93	C	7,019.26